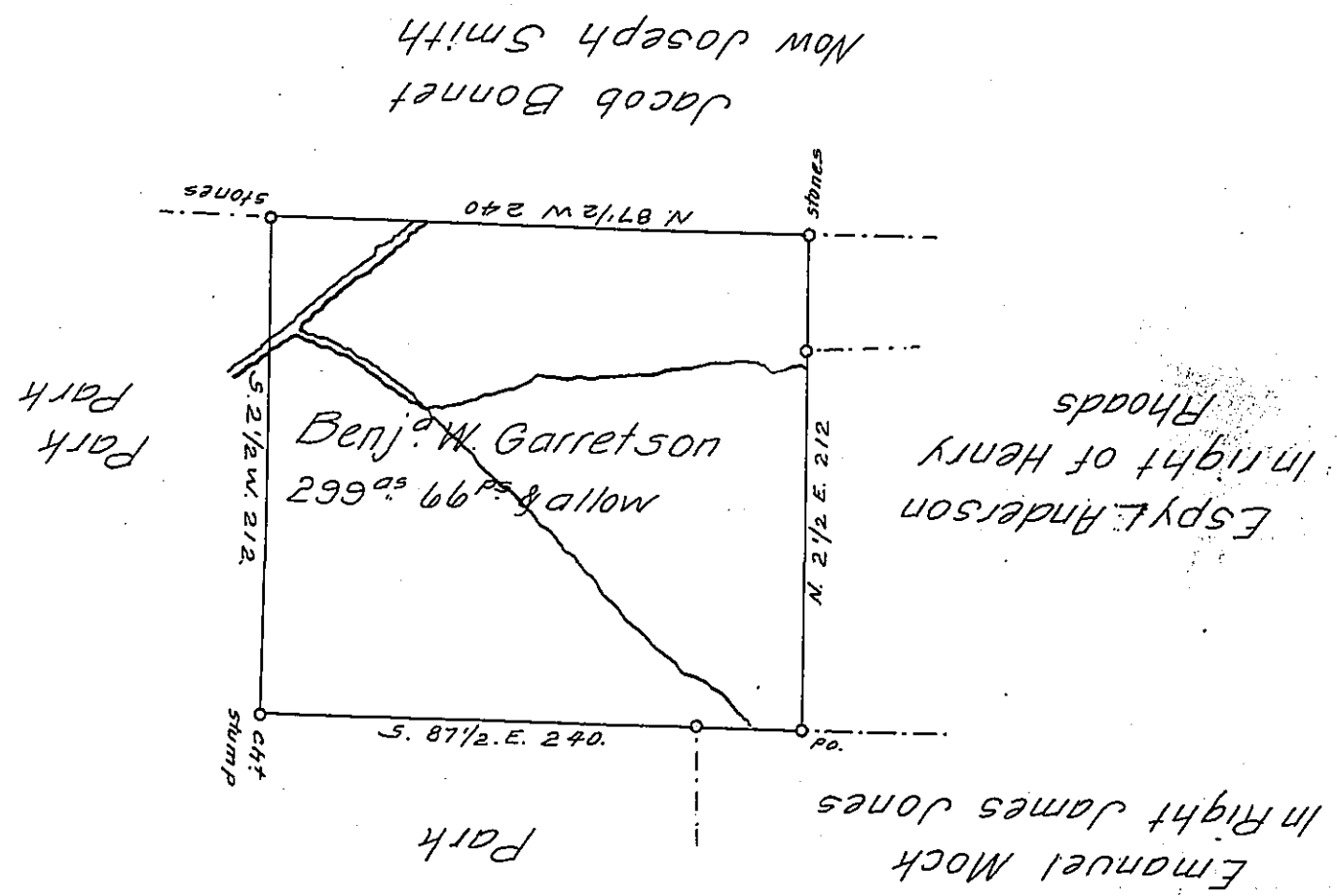


FORM NO 1.



Situate on Clear ^{Shade} Creek in ~~Clear~~ Township Somerset County. Containing 299 Acres. 66 perches. And the usual allowance of Six per Cent. for Roads &c. Surveyed the 21st day of July A.D. 1871. In pursuance of A Warrant granted to Benj^a W. Garretson dated the 16th June 1871.

Sam^l Ketterman -

Examined, Approved and Certified this 3rd day of August A.D. 1871.

To J. M. Campbell }
Sur. Gen. }

A. J. Colborn
C.S.

IN TESTIMONY that the above is a copy of the original remaining on file in the Department of Internal Affairs of Pennsylvania, made conformably to an Act of Assembly approved the 16th day of February, 1833, I have hereunto set my Hand and caused the Seal of said Department to be affixed at Harrisburg, this fifth day of February 1908.

Henry Horck
Secretary of Internal Affairs.